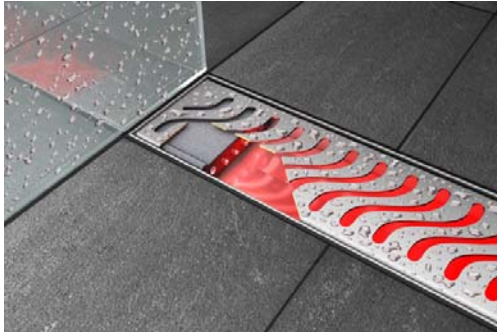




ACO Lightline Installation & Operation Manual

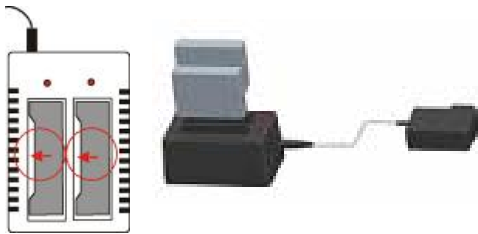


Product Description

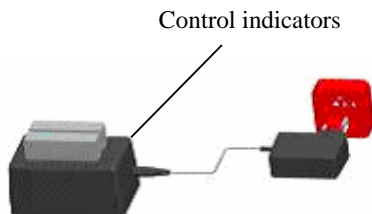
ACO Lightline comprises two low voltage battery operated LED illumination modules which fit directly into the ACO ShowerChannel grating. The modules illuminate automatically when in contact with water and switch off after approximately 2 minutes when the shower is switched off.

Charging the LED Modules

The LED modules must be fully charged before installation for the first time. Ensure the LED units are clean and dry and insert into the charger as shown below. Note the LED module profile orientation to fit correctly into the charger.



Connect the mains adaptors to the charger and switch on the power. The control indicators will begin to flash. The charging process can take up to 18 hours to complete. The charging is complete when the control indicators stop flashing and remain continuously illuminated.



Note

The indicators will flash quickly if the energy level in the LED module is low. If the indicators continue to flash quickly for greater than 1 hour, then the LED module is defective and should be replaced.

Under normal conditions and use, fully charged LED modules should last approximately 3 months between charges.

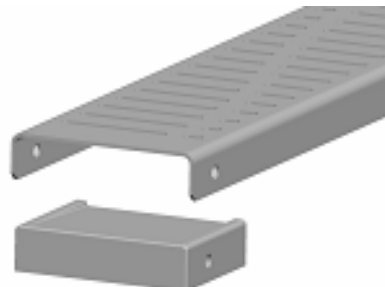
For optimum performance, keep the LED modules fully charged to preserve their working life.

Installing the LED Modules

1. Remove the grating from the Shower Channel.



2. Remove the grating plastic friction locks from both ends of the grating and insert the LED modules ensuring the LED's are facing **towards the centre** of the grating and that the slightly angled face of the module is **uppermost** in the grating to allow water to drain freely.



- Secure the LED modules in the grating using the plastic fixing plugs supplied with the modules.



- Replace grating.



Maintenance

Before re-charging the LED modules, use clean water to ensure each unit is thoroughly clean and then fully dry each unit before insertion into the charging unit.

Important

The charger unit supplied must **only** be used to charge the ACO Lightline LED modules. Do not re-charge other battery systems using the charger otherwise damage may occur.

Technical Data

LED Units

Each LED unit contains 4 LED available in red, green, blue or rainbow.

Battery: 3.6 volts @ 2700 mAh.

Re-Charging Unit

Input: 110 – 249V AC, 50/60Hz, 180mA.

Output: 9V DC, 600mA max.

Protection category: II

ACO Building Drainage

ACO Business Centre, Caxton Road, Bedford, Bedfordshire MK41 0LF

Tel: 01462 816666 Fax: 01462 851490

e-mail: buildingdrainage@aco.co.uk

website: www.acobuildingdrainage.co.uk

