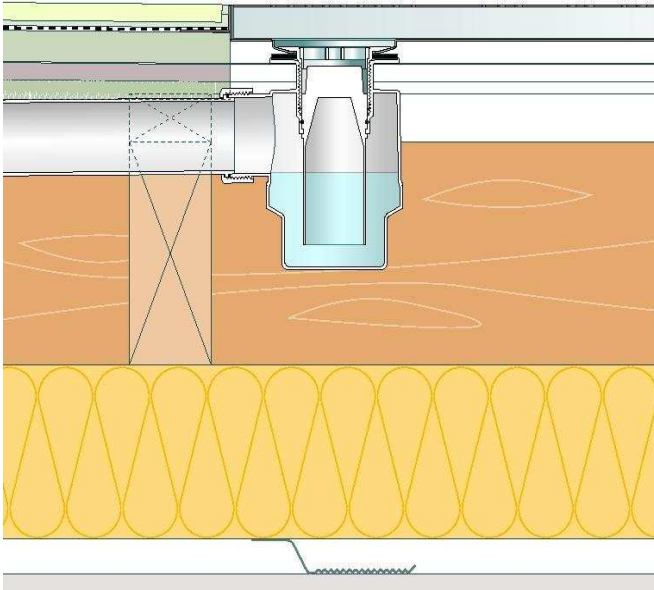


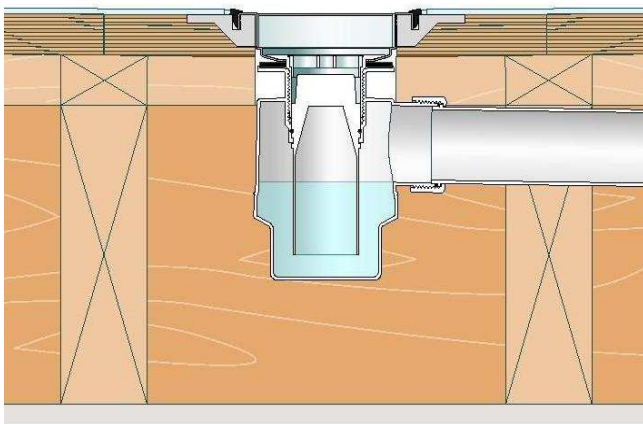
ACO Shower Channel - Typical Sections

Shower Channel with tiles in joisted acoustic floor



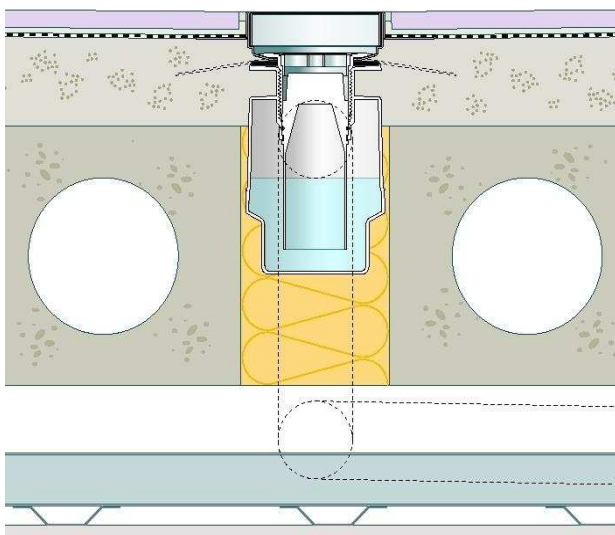
1. Where alterations to joists are necessary consult Structural Engineer for advice and reinforce joists as advised. Cut firrings to 1:80 fall towards channel and fix to blocking between joists.
2. Lay acoustic overfloor in accordance with manufacturer's instructions, cut rectangular hole and locate shower channel body parallel to joists.
3. Bond and fix channel flange using No.8 x 12mm countersunk screws to acoustic floor - fixings must not penetrate through top board.
4. Connect pipework, laid to fall. (Connection to stack should use a flexible coupling pipe coupling). Test for leaks. Provide temporary debris protection to inner channel.
5. Apply suitable primer to tiled edge of channel.
6. Apply tanking membrane to whole floor in accordance with manufacturer's instructions. Dress membrane over channel flange.
7. Apply tile adhesive working carefully around channel. Lay the ceramic tiles, working away from channel. Leave 8mm gap for grout or flexible sealant at edge of grating frame.
8. Complete all local work and remove temporary protection. Prime trap and fit grating.

Shower Channel with vinyl in joisted floor



1. Where alterations to joists are necessary consult Structural Engineer for advice and reinforce joists as advised. Cut firrings to 1:80 fall towards channel.
2. Cut a rectangular plywood panel sized to allow a 40mm border measured from outside edge of ACO Vinyl Edge Profile. Form stepped rebate in panel to receive vinyl edge profile. Pack out level and screw plywood panel to firrings.
3. Fix blocking to support butt joint.
4. Locate channel and trap within rebated ply panel. Countersink, screw and bond through vinyl edge profile.
5. Connect pipework, laid to fall and test for leaks.
6. Lay 18-22mm marine plywood decking on firrings butt jointed to plywood panel. Provide temporary debris protection to inner channel.
7. Lay and bond vinyl sheet flooring onto ACO vinyl edge profile and hot air weld to ACO Vinyl Edge Seal.
8. Complete all local work and remove temporary protection. Prime trap and fit grating.

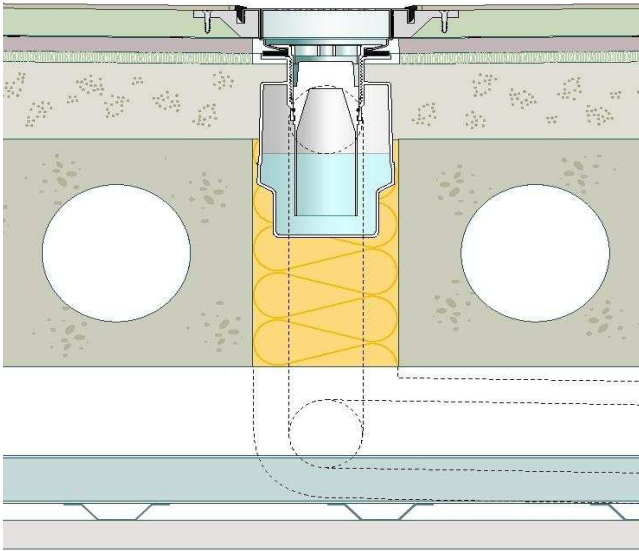
Shower Channel with tiles in suspended concrete floor



1. Form hole in concrete floor to receive shower channel body, trap and outflow pipework.
2. Set fishtail ties to provide key with screed and temporarily support all components to required finished floor level. Provide temporary debris protection to inner channel.
3. Lay screed to 1:80 fall ensuring fishtail ties are fully keyed in.
4. Connect pipework, laid to fall and test for leaks.
5. Inject polyurethane expanding foam within void around drain body, trap and pipework to provide additional support.
6. Apply suitable primer to tiled edge of channel.
7. Apply tanking membrane to whole floor screed in accordance with manufacturer's instructions. Dress membrane onto channel flange.
8. Apply tile adhesive working carefully around the channel. Lay ceramic tiles working away from channel. Leave 8mm gap for grout or flexible sealant at edge of grating frame.
9. Complete all local work and remove temporary protection. Prime trap and fit grating.

ACO Shower Channel - Typical Sections

Shower Channel with vinyl in suspended concrete, acoustic floor



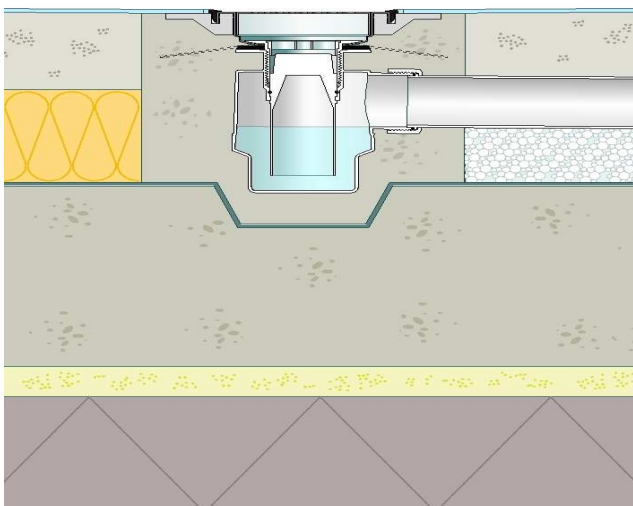
1. Form hole in concrete floor to receive shower channel body, trap and outflow pipework.
2. Lay screed to 1:80 fall working to edge of hole in slab.
3. Form stepped rebate rectangular hole in an acoustic floor system panel and locate over hole in the slab. Continue laying acoustic floor system in accordance with manufacturer's instructions.
4. Locate channel, trap and pipe bend within formed rectangular hole. Bond and fix ACO Vinyl Edge Profile using non ferrous No.8 x 12mm countersunk screws to acoustic floor - fixings must not penetrate through acoustic top board.
5. Connect pipework, laid to fall (Connection to stack should use a flexible pipe coupling). Test for leaks. Provide temporary debris protection to inner channel.
6. Fit slit insulation to pipework for acoustic purposes. Inject polyurethane expanding foam into hole around channel body, trap and pipework to provide additional support taking care not bridge acoustic floor system.
7. Lay and bond vinyl sheet flooring onto ACO Vinyl Edge Profile and hot air weld sheet flooring to ACO Vinyl Edge Seal.
8. Complete all local work and remove temporary protection. Prime trap and fit grating.

Shower Channel with tiles in concrete ground floor



1. Form recess in slab to accommodate trap prior to laying DPM. Lay DPM
2. Set fishtail ties to provide key with concrete backfill, temporarily support all components to required finished floor level.
3. Connect pipework, to fall, discharging to back inlet gully and test for leaks. Provide temporary debris protection to inner channel.
4. Box out and backfill concrete around trap and channel ensuring fishtails are fully keyed in.
5. Remove shutters and lay insulation forming 20mm duct around pipe to receive polystyrene bead fill.
6. Lay screed to 1:80 fall.
7. Apply suitable primer to tiled edge of channel.
8. Apply tanking membrane to whole floor screed in accordance with manufacturer's instructions. Dress membrane onto channel flange.
9. Apply tile adhesive working carefully around the channel. Lay ceramic tiles working away from channel. Leave 8mm gap for grout or flexible sealant at edge of grating frame.
10. Complete all local work and remove temporary protection. Fit and prime trap. Fit grating.

Shower Channel with vinyl in concrete ground floor



1. Form recess in slab to accommodate trap prior to laying DPM. Lay DPM
2. Set fishtail ties to provide key with concrete backfill, temporarily support all components to required finished floor level.
3. Connect pipework, to fall, discharging to back inlet gully and test for leaks. Provide temporary debris protection to inner channel.
4. Box out and backfill concrete around trap and channel ensuring fishtails are fully keyed in.
5. Remove shutters and lay insulation forming 20mm duct around pipe to receive polystyrene bead fill.
6. Lay screed to 1:80 fall.
7. Lay and bond vinyl sheet flooring onto ACO Vinyl Edge Profile and hot air weld sheet flooring to ACO Vinyl Edge Seal.
8. Remove temporary protection. Prime trap and fit grating.